



*We're There.*



# PRODUCT OVERVIEW

# Why Winters

## 1. Large and deep product offering

Allows access to many new and different customers

## 2. High quality products

Worry-free installations with an extremely low defect rate of **0.17%**

## 3. Five year warranty

Covering all instrumentation

## 4. Servicing all market segments

Covering both the industrial and commercial markets

## 5. High field support presence

A large number of Regional Sales Managers providing global coverage

## 6. Distributed globally

Global distribution in over 90 countries through 8 Winters sales and service offices

## 7. Distributor training events

Ensuring our partners are fully equipped to promote, sell and support our instrumentation products

## 8. Engineering team

Responding to technical RFQs and providing application know-how

## 9. Regular 3rd party factory audits

Customers and agencies verifying standards and certifications

## 10. Approvals

Adhering to higher standards: 3A, RoHS, CE, CRN, CSA, FM, ISO 9001, UL

## 11. Distributor portal

All of our Winters tools at your convenience

## 12. Global AMLs

Easier acceptance into industrial and commercial projects

## 13. StabilizR®

Gauge dampening technology without glycerin filling

## 14. Strong R&D

Numerous new product launches

## 15. Platinum service

Front of the line service

## 16. UPC labelled product and packaging

Fast and simple product identification

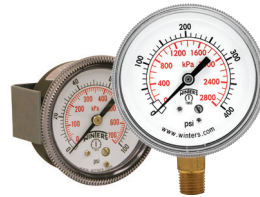
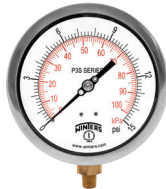
## 17. Comprehensive website and App

Embracing mobile technology

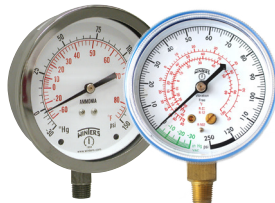
## 18. Canada's Best Managed Companies Program Winner Since 2017

Recognition for innovation and sustained performance re-enforces Winters' commitment to continuous improvement

# Pressure Gauges



	<b>P1S</b>	<b>P3S</b>	<b>P9S/P9U 90 Series</b>	<b>PAG/PSQ 3A Sanitary</b>
<b>Dial Size</b>	3.5" (90mm) 4" (100mm) 4.5" (115mm) 6" (150mm)	4.5" (115mm) 6" (150mm) 8.5" (215mm) 10" (250mm)	1.5" (40mm) 2" (50mm) 2.5" (63mm) 3.5" (90mm)	2.5" (63mm) 4" (100mm)
<b>Tube and Socket</b>	Phosphor bronze/brass*	316L SS/brass*	Phosphor bronze/brass*	316L SS
<b>Connection</b>	1/4" NPT	1/4" NPT for 600 psi or lower 1/2" NPT for 1,000 psi or higher	1/4" NPT 1/8" NPT	0.75", 1.5" or 2" Tri-Clamp®
<b>Range</b>	Vac - 5,000 psi/kPa	Vac - 20,000 psi/kPa	Vac - 600 psi/kPa	Vac - 1,000 psi/bar

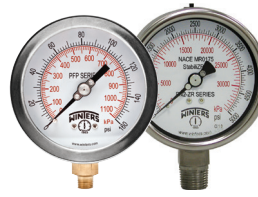
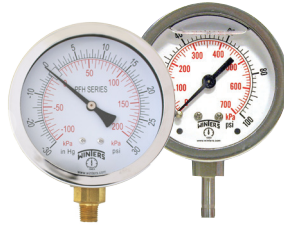
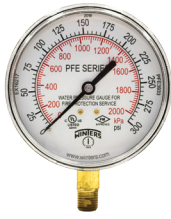


	<b>PAM Ammonia PFG Refrigeration</b>	<b>PBC Forged Brass Case</b>	<b>PCC Colour Coded</b>	<b>PCG/PRL/PWL/PSP/PUP Compressed Gas</b>
<b>Dial Size</b>	2.5" (63mm), 3.5" (90mm), 4" (100mm), 6" (150mm), 8.5" (215mm), 10" (250mm)	2.5" (63mm) 4" (100mm)	4" (100mm)	1" (25mm) 1.5" (40mm) 2" (50mm) 2.5" (63mm)
<b>Tube and Socket</b>	Bronze Nickel 316L SS	Brass*	Phosphor bronze/brass*	Phosphor bronze/brass*, 304 SS, 316 SS, 316L SS
<b>Connection</b>	1/4" NPT	2.5" dial: 1/4" NPT 4" dial: 1/4", 1/2" NPT	1/4" NPT or 1/2" NPT standard	1/8" NPT or 1/4" NPT
<b>Range</b>	Vac - 500 psi	Vac - 10,000 psi/kPa	Vac - 20,000 psi/kPa	Vac - 5,000 psi/kPa



	<b>PCT/PCT-LF Contractor</b>	<b>PDT Differential PDX Duplex</b>	<b>PEM/PEM-LF/PEU Economy</b>	<b>PFD Differential PFD Compact</b>
<b>Dial Size</b>	4.5" (115mm)	4.5" (115mm) 6" (150mm)	1.5" (40mm), 2" (50 mm) 2" (50mm) <b>Pool Gauge</b> 2.5" (63mm) 4" (100mm)	2 1/16" (52.4mm) 4" (100mm)
<b>Tube and Socket</b>	Phosphor bronze/brass* or lead free brass	316L SS/phosphor bronze/brass*	Phosphor bronze/brass*	Die-cast aluminum, silicon rubber or Glass filled nylon, black
<b>Connection</b>	1/4" NPT	1/4" NPT	1/8" NPT or 1/4" NPT standard	1/8" NPTF high & low, side & back or 3/16" barbed for ID tubing
<b>Range</b>	Vac - 5,000 psi/kPa	0 - 600 psi	Vac - 5,000 psi/kPa	-0.25 - 150"H <sub>2</sub> O or 125 - 750 mmH <sub>2</sub> O

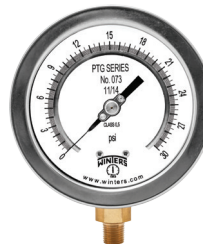
# Pressure Gauges



	<b>PFE Sprinkler</b>	<b>PFH / PTS Hydraulic</b>	<b>PFP Industrial PN2 NACE</b>	<b>PFQ / PFQ-LF Stainless Steel</b>
<b>Dial Size</b>	3.5" (90mm)	2.5" (63mm), 4" (100mm)	2.5" (63mm) 4" (100mm) 4.5" (115mm) 6" (150mm)	1.5" (40mm) 2" (50mm) 2.5" (63mm) 4" (100mm)
<b>Tube and Socket</b>	Phosphor bronze/brass*	Phosphor bronze/ brass*	316L SS/brass*	Brass*/ Lead-free brass/ 316 SS
<b>Connection</b>	1/4" NPT	1/4" or 1/2" NPT with restricted orifice or tubestub	1/4" NPT, 1/2"NPT, Autoclave®	1/8", 1/4" or 1/2" NPT
<b>Range</b>	0-300 psi/kPa or 0/80/retard-250 psi/kPa	Vac -15,000 psi	Vac - 40,000 psi/kPa	Vac - 15,000 psi/kPa



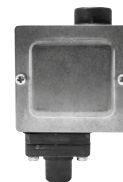
	<b>PLP Low Pressure</b>	<b>PMN Mining</b>	<b>PPC Process PRC Receiver</b>	<b>PPD/PRD/PSD/PVD Differential</b>
<b>Dial Size</b>	2.5" (63mm) 4" (100mm) 4.5" (115mm) 6" (150mm)	2" (50mm)	4.5" (115mm)	2.5" (63mm) 3.5" (90mm) 4.5" (115mm)
<b>Tube and Socket</b>	316 SS/brass*	Brass*	Brass*/ 316L SS	SS and others
<b>Connection</b>	1/4" NPT	3/8" Steck-O connection, quick connect	1/4" NPT or 1/2" NPT	1/4" or 1/2" NPT and others
<b>Range</b>	"H <sub>2</sub> O - 10 psi/kPa	0 - 9,000 psi	Vac - 20,000 psi	"H <sub>2</sub> O - 110 psid



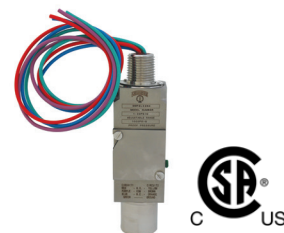
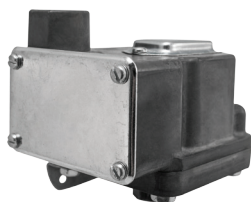
	<b>PSC Safety Case</b>	<b>PSG Shaeffer</b>	<b>PTG Test</b>	<b>StabilizR® Family</b>
<b>Dial Size</b>	4" (100mm) 4.5" (115mm) 6" (150mm)	4" (100mm) 6" (150mm)	4" (100mm) 6" (150mm) Mirror band for precise reading	1.5" (40mm) 2" (50mm) 2.5" (63mm) 4" (100mm) 4.5" (115mm)
<b>Tube and Socket</b>	316L SS	SS/ 316L SS	Brass*/ 316 SS	Phosphor bronze/brass*/ 316 SS/ 316L SS
<b>Connection</b>	1/4" or 1/2" NPT	1/2" NPTM bottom	1/4" or 1/2" NPT	1/8" NPT, 1/4" NPT or 1/2" NPT
<b>Range</b>	Vac - 20,000 psi/kPa	"H <sub>2</sub> O - 300 psi	Vac - 10,000 psi/kPa	Vac - 20,000 psi/kPa



## Pressure Switches



	<b>PEC</b>	<b>WPS Commercial</b>	<b>1WPS Pressure</b>	<b>2WPS General Purpose</b>
<b>Features</b>	4" (100mm) all SS with switch	Low pressure differential switch with SPDT	All SS wetted parts	Aluminum housing and wetted parts. CSA approved
<b>Range</b>	Vac - 10,000 psi	0.08 - 16.0 "H <sub>2</sub> O	3 - 5,000 psi	Vac - 500 psi
<b>Applications</b>	Light duty monitoring and control of pressure lines	Monitoring air filters, ventilation ducts and heat exchangers	Commercial and general industrial installations	Suitable for all general purpose areas



	<b>3WPS Industrial</b>	<b>4WPS Low Pressure</b>	<b>5WPS Differential</b>	<b>9WPS Explosion Proof</b>
<b>Features</b>	Piston-type snap action switch for low to mid-pressure installations	Low pressure switch for very high accuracy requirements	Bellows actuated switch. Single and Dual contacts available	All stainless steel design. CSA, and dual-seal approved
<b>Range</b>	0.5 (0.03) - 400 (27) psi (bar)	0.06 (2) - 150 (10.3) psi/bar	15 psi - 5,000 psi	Vac - 10,000 psi
<b>Applications</b>	Suitable for pump and compressor monitoring, HVAC systems and general industrial applications	Suitable for oil and gas, mining and general industrial applications	High-level control, including filtration and pumping stations	Hazardous locations; safety panels, gas compressors, turbines and pump skids

## Pressure Transmitters



	<b>DPG Digital</b>	<b>LE1 OEM</b>	<b>LE3 General Purpose</b>	<b>LIM Industrial</b>
<b>Features</b>	2.5" (63mm) digital gauge with rubber boot and SS wetted parts	Compact SS with ceramic sensor. Developed for OEM applications. CE approved	Can be utilized in many applications. CSA, ±0.5% accuracy	Heavy duty design and ±0.25% accuracy
<b>Range</b>	Vac - 15,000 psi	Vac - 2,000 psi	Vac - 5,000 psi	0 - 8,700 psi
<b>Applications</b>	General purpose gauge tester for calibration	Pump and compressor monitoring, refrigeration and HVAC	Industrial machinery, hydraulics & pneumatics, compressor controls, boilers, chillers, AC & refrigeration	Appropriate for all rugged pressure readings in machinery and end user installations

# Pressure Transmitters



	<b>LIS Intrinsic Safe</b>	<b>LLP Low Pressure</b>	<b>LMH Hydraulic</b>	<b>LM1 Anti-Clogging</b>
<b>Features</b>	Intrinsically safe with heavy duty design, and $\pm 0.25\%$ accuracy	SS construction with sensitive ceramic sensor	All SS with welded sensor for high shock and vibration	All SS construction with protective barrier and lightning protection
<b>Range</b>	0 - 8,700 psi	0 - 25 psi	0 - 8,700psi	up to 50 psi
<b>Applications</b>	Hazardous locations in Oil & Gas, Wastewater, and Power Generation	Developed for low pressure applications in general industry and OEM sector	Suitable for heavy duty process and automation control including mobile hydraulics and presses	Level measurement in lift stations and reservoirs

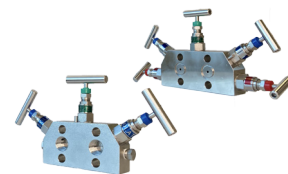
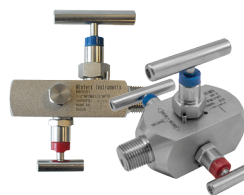
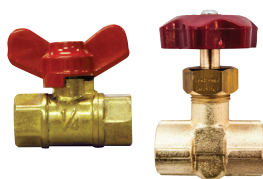


	<b>LM3/LM6/LM7 Submersible</b>	<b>LST Sanitary</b>	<b>LTF Flush Mount</b>	<b>LTD Differential</b>
<b>Features</b>	Slim and full body transmitters with high accuracy	3A sanitary transmitter for any tri-clamp requirements	All SS flush mount for slurry media	Uni & Bi-directional differential transmitters offering high stability
<b>Range</b>	up to 300 psi	0 - 1,000 psi	0 - 5,000 psi	0 - 5,000 psi
<b>Applications</b>	All level and submersible requirements with ceramic and SS sensors	Covers food and beverage and pharmaceutical installations	Flush port to ensure the transmitter does not clog	To measure pressure drops across filters



	<b>LXP Explosion Proof</b>	<b>WinSMART™ LY16 Pressure Transmitter</b>	<b>WinSMART™ LY36 Differential Transmitter</b>
<b>Features</b>	Designed with explosion proof enclosure. cULus, and single-seal approved. $\pm 0.25\%$ accuracy	Explosion proof smart pressure transmitter for hazardous environments. Providing both analogue and digital communication outputs including a highly functioning LCD display. With a built-in temperature sensor, LY16 provides 0.2%, 0.5%, 0.1%, 0.075% or 0.05% accuracy	Explosion proof smart differential pressure transmitter for hazardous environments. Providing both analogue and digital communication outputs including a highly functioning LCD display with re-zero function. With a built-in temperature sensor, LY36 provides 0.075% or 0.05% accuracy
<b>Range</b>	Vac - 10,000 psi	Vac - 14,500 psi	Vac - 1,450 psi
<b>Applications</b>	Hazardous locations in oil and gas installations including pump and compressor controls	Pressure monitoring for oil and gas, well head process control, petrochemical installations, power generation equipment and all hazardous locations	Differential pressure monitoring for oil and gas installations, well head process control, petrochemical installations, power generation equipment and all hazardous locations

## Valves & Manifolds

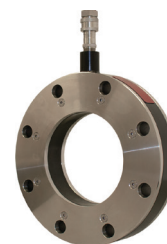


	<b>SMV-LF &amp; SNV-LF Mini Valve</b>	<b>NVA Needle Valve</b>	<b>BBV 2 &amp; 3 -Handle</b>	<b>MVA 2,3 &amp; 5 Handle Manifold</b>
<b>Features</b>	An economical isolation valve for pressure gauges and transmitters, Brass* or lead free brass wetted parts	SS, CS and NACE configurations in straight and angle body	SS, CS and NACE variants with 1/4" bleed and 2-handle control	Designed for use with differential pressure transmitters and impulse lines. With isolation, venting and equalizing
<b>Range</b>	0 - 400 psi	6,000 and 10,000 psi	6,000 and 10,000 psi	6,000 and 10,000 psi
<b>Applications</b>	Provides flow control for non-corrosive applications including water lines	Severe duty which require valve isolation	Heavy duty installations ideally bundled with transmitters and switches	Critical in process and industrial environments for enabling repair, shut downs and updating of instrumentation

## Diaphragm Seals



	<b>D10 PVC</b>	<b>D15 Threaded</b>	<b>D20 Sanitary</b>	<b>D30/D40 OEM</b>
<b>Features</b>	Durable and flexible PTFE seal with PVC housing	Threaded and flush mount	Tri-Clamp connection with smooth flush surface	Compact one-piece design and high pressure rated
<b>Range</b>	Vac - 200 psi	50 - 5,800 psi	30 - 600 psi	30 - 1,000 psi or 1,000 - 6,000 psi
<b>Applications</b>	To be installed in applications where the media would corrode metal instruments	Suitable for any process where freezing or solidification of the pressure media is a concern	Sanitary connection for food and beverage and pharmaceuticals	Suited for compact OEM installations



	<b>D44/D46 Flanged</b>	<b>D70/D71/D74 Industrial 2-piece</b>	<b>D81 Isolation Ring</b>	<b>D85 In-line D90 Saddle</b>
<b>Features</b>	All welded flanged construction Continuous use rated seal	Heavy duty, all stainless steel construction Continuous use rated seal	Allows for flow-through of highly viscous material, non-clogging	Protects and ensures no clogging of instruments
<b>Range</b>	30 - 2,500 psi	30 - 2,500 psi	Vac - 1,000 psi	30 - 600 psi
<b>Applications</b>	Engineered environments such as upstream oil and gas and petrochemical plants	Utilized with highly viscous and corrosive media	Pressure measurement in waste water, P&P and mining	Viscous and slurry media in process applications

# Thermometers



	<b>TAG HVAC Gold Case</b>	<b>TAS/TAS-LF Industrial 5"</b>	<b>TBM/THS Bi-Metal</b>	<b>TCT/TMT Surface Mounted</b>
<b>Dial/Scale</b>	4.5" (115mm) 6" (150mm)	5" (125mm)	TBM: 1" (25mm), 2" (50mm) 3" (75mm), 4" (100mm) 5" (125mm), 6" (150mm) THS: 3" (75mm)	2.5" (63mm)
<b>Sensing Element</b>	Brass*	Brass* or lead free brass	SS	Bi-metallic coil
<b>Bulb/Stem Length</b>	2" (50mm)	1.825" (46mm)	TBM: 2.5" (63mm) - 48" (1,219mm) THS: 2.5" (63mm) - 24" (600mm)	-
<b>Accuracy</b>	±2% full scale	±2% full scale	±1% full scale	TCT: ±3% full scale TMT: ±2% full scale



	<b>TBT HVAC</b>	<b>TNR Food &amp; Beverage</b>	<b>Hydrometer Alcohol and Beer</b>	<b>Hygrometer</b>
<b>Dial/Scale</b>	3.5" (90mm)	3" (75mm)	11.7" (297mm) 13" (331mm)	4.5" (115mm)
<b>Sensing Element</b>	Brass*	304 SS	Filled Glass Tube	304 SS
<b>Bulb/Stem Length</b>	1.420" (36mm)	2.5" - 9"	4.4" (112mm) 8.4" (213mm)	-
<b>Accuracy</b>	±2% full scale	±1%	-	±1%



	<b>TSW/TSW-LF Hot Water</b>	<b>THR/TRR Remote Reading</b>	<b>TIM/TIM-LF 9" TSD Solar</b>	<b>TTD Tridicator</b>
<b>Dial/Scale</b>	Dial: 2" (50mm) or 2.5" (63mm) Scale: 8" (200mm)	2.5" (63mm), 3.5" (90mm) 4" (100mm), 4.5" (115mm) 6" (150mm), 8.5" (215mm)	TIM/TIM-LF: 9" (230mm) TSD: LCD size: 2.25" (57mm) x 2.25" (57mm)	2.5" (63mm) 3" (75mm)
<b>Sensing Element</b>	Brass* or lead free brass	SS/brass*	TIM/TIM-LF: Brass* or lead free brass TSD: Brass*	Brass*
<b>Bulb/Stem Length</b>	Dial: 1.5" (40mm) Scale: 2.5" (63mm)	6" (150mm)	3.5" (90mm), 6" (150mm)	2.5" (63mm): 2.15" (55mm) stem, 3" (75mm): 2.75" (70mm) stem
<b>Accuracy</b>	±1% full scale	Gas actuated: ±1% full scale Vapour actuated: ±2% full scale	±1% of reading	Pressure: ±3-2-3% Temperature: ±3% full scale

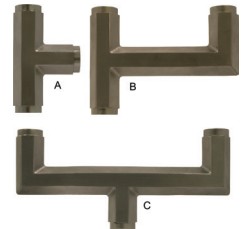


## RTDs & Thermocouples



	<b>WinSMART™ TY52 Transmitter</b>	<b>TER Industrial RTD Sensor</b>	<b>TET Thermocouples Sensor</b>
<b>Features</b>	Explosion proof smart RTD temperature transmitter for hazardous environments Providing both analogue and digital communication outputs (HART® & Modbus) including a highly functioning LCD display TY52 accuracy is 0.5%	Highly accurate RTD with PT100 sensor and 4/20mA transmitter $\pm 0.15^{\circ}\text{C}$ at $0^{\circ}\text{C}$ accuracy with standard stainless steel stem material	Functional J & K type thermocouple sensors providing a wide range of temperature options, Accuracy of $\pm 0.4^{\circ}\text{C}$ Class 1
<b>Range</b>	-50 - $400^{\circ}\text{C}$ (-58 - $752^{\circ}\text{F}$ )	-328°F - 1,022°F (-20°C - $550^{\circ}\text{C}$ )	J-type -328°F - 1,382°F (-200°C to $750^{\circ}\text{C}$ ), K-type -328°F - 2,192°F (-200°C to $1,200^{\circ}\text{C}$ )
<b>Applications</b>	Utilized and installed anywhere where temperature measurement is required This product has a rugged design and is equipped with the communication protocols to meet all your day-to-day requirements	Single sensing installations include processing plants, paper mills, storage tanks and petrochemical facilities	Single sensing installations include processing plants, and petrochemical facilities Multi-point installations include refineries, reactors and gas-to-liquid process

## Accessories

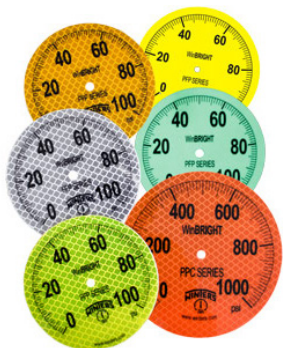


	<b>SCT Cooling Tower</b>	<b>SOP Protector</b>	<b>SSN/SSN-LF/SAS Snubbers</b>	<b>SSP Syphon</b>	<b>FIR Instrument Tee</b>
<b>Features</b>	Perforated cover and spiral tube quickly dissipates media temperature	Easy field adjustable setpoint All stainless steel	SS, brass* and lead-free brass	CS, brass* and SS materials	All SS instrument for diaphragm and isolation seals
<b>Range</b>	0 - 1,500 psi	0 - 10,000 psi	0 - 20,000 psi	0 - 1,650 psi	0 - 1,000 psi
<b>Applications</b>	Utilized for extremely high temperature media	For the protection of pressure instruments against line surges	Protection against pressure pulsations	For steam service installations eg. boiler	Used for multiple instrument installations

## Test Kits



	<b>STP/ STP-LF Test Plug</b>	<b>AOM/PET/PET-LF Test Kits</b>	<b>PGV Tire Gauge</b>	<b>PTK/ PGTK Pressure &amp; Temperature</b>
<b>Features</b>	Facilitates quick pressure readings. Brass* and lead free brass	Water and gas line testing gauges	Tire pressure gauge with protective cover and carrying case	Test kits in carrying case for local inspection and testing
<b>Range</b>	Up - 1,000 psi	up - 300 psi/kPa	up - 100 psi/kPa	up - 300 psi
<b>Applications</b>	Mainly used in plumbing, HVAC and refrigeration	For plumbing, HVAC and gas line testing	For tire pressure testing	Test kits for water and gas line inspection requirements



## WinBRIGHT

- High visibility reflective, florescent and glow-in-the-dark dials with larger bolder numbers provide increased readability in installations with poor exposure to light
- WinBRIGHT is available on **PPF, PPF-ZR, PPC and PPC-ZR** gauges



## Flanges and U-Clamps

Front flanges, back flanges and u-clamps provide a variety of mounting possibilities for instrumentation



## Tags

Winters can work with engineers to add stainless steel tags to identify instrumentation for large projects



## Pointers (Red set pointer, Maxi/Mini pointer)

- Red set pointers allow operators to set a visible target for system operation
- Maxi or mini pointers can be installed to measure pressure spikes or losses of pressure



## Capillary

Added to gauges and thermometers allowing them to be installed in applications requiring remote reading



## Safety Lens

- Acrylic, polycarbonate, glass and safety glass lenses are available depending on your application requirements
- Safety glass lenses are utilized when user safety is a requirement, preventing the lens from rupturing



## Case Materials

- Plastic, steel, black steel, die-cast aluminum, phenolic, stainless steel and many more cases are available
- The selection of the case material will depend on the ambient and process conditions



## Rubber Boot

- Protective rubber boots can be added to many pressure gauges
- The rubber boot protects gauge cases installed in high traffic areas from knocks



## Restrictor screw

- Restrictor screws come standard or are an option on many Winters gauges
- Restrictor screws reduce the size of the gauge's orifice protecting it from spikes in pressure



**Calibration**

- Servicing for instrumentation accuracy against certified test gauge
- Available for all gauges and thermometers
- Calibration can be certified



**Dial Changing**

- To replace old or outdated dials
- Any Winters or non-Winters instrumentation can have dials replaced
- Custom dials are available – Winters can design dials to your specifications



**Fluid Filling / Drying**

- Fluid filled gauges dampen and lessen pointer vibration of gauges
- Top up fluid in cases where existing fluid has leaked out
- All fill fluids available
- Convert to dry gauge if fluid fill is no longer required



**Gauge Audit Program( G.A.P.)**

- A Winters Sales Professional tours a facility documenting instrumentation (Winters and non-Winters)
- They identify and document working and non-working instrumentation
- A report is provided identifying instrumentation part numbers and locations and notifying corrective actions required (if any)



**Oxygen Cleaning**

- Critical when instrument is to be used in oxygen service
- Cleaning of Bourdon tube and gauge socket
- Oxygen cleaned gauges will be returned in individually sealed bags in marked boxes
- Available for all instrumentation



**Seal Assembly**

- For all types of seals and pressure gauges, switches and transmitters
- Compatible Winters and non-Winters products are accepted
- Diaphragm seal filling included in service
- Calibration is done on all assembled units



**Repairs**

- Full repair for pressure and temperature instruments, and diaphragm seals
- Non-Winters products can also be repaired
- Recommended when cost savings justify repairing rather than replacing

More accessories are available. Please contact us for a full list of products. Products with an "LF" suffix are available with lead free wetted parts.

\* **WARNING:** This product can expose you to chemicals including lead, which is known to the State of California to cause cancer and birth defects or other reproductive harm. For more information go to [www.P65Warnings.ca.gov](http://www.P65Warnings.ca.gov).





# WINTERS INSTRUMENTS

MANUFACTURER OF INDUSTRIAL INSTRUMENTATION



**Winters Instruments is a global manufacturer of premium quality pressure and temperature instrumentation, with distribution partners in over 90 countries. Please contact us for your nearest Regional Manager.**

**Corporate - Canada**

Winters Instruments  
121 Railside Road  
Toronto, Ontario  
M3A 1B2  
Tel: 416-444-2345  
1-800-WINTERS  
Fax: 416-444-8979  
sales@winters.com

**Canada - Calgary**

Winters Instruments  
2410D 2nd Avenue SE  
Calgary, Alberta  
T2E 6J9  
Tel: 403-723-6645  
1-800-WINTERS  
Fax: 403-723-6647  
calgary@winters.com

**USA - Houston**

Winters Instruments  
5400 W. Sam Houston Pkwy N.  
Houston, Texas  
77041  
Tel: 281-880-8607  
1-800-WINTERS  
Fax: 281-880-8614  
usasales@winters.com

**Europe - Middle East - Africa**

Winters Instruments  
Dubai Airport Free Zone  
6WB G50  
Dubai, United Arab Emirates  
Tel: 971-4295-9177  
Fax: 971-4295-9177  
emeasales@winters.com

**Asia - Shanghai**

Winters Instruments  
Room 203, Building 8,  
No. 471, Guiping Road  
Shanghai 200233 China  
Tel: 86-21-6104-2610  
Fax: 86-21-6104-2615  
asiasales@winters.com  
www.wintersasia.com

**Latin America - Buenos Aires**

Winters Instruments  
Lamadrid 121  
Los Troncos del Talar, B1608CEC  
Buenos Aires, Argentina  
Tel: 54-11-4715-3036  
latinsales@winters.com  
www.winters.com.ar

**United Kingdom - Northampton**

Winters Instruments  
Unit, 4B Kingsfield Cl,  
Northampton,  
NN5 7QS  
Tel: 44-0-1604-434826  
emeasales@winters.com  
www.winters.com



Distributed by: